



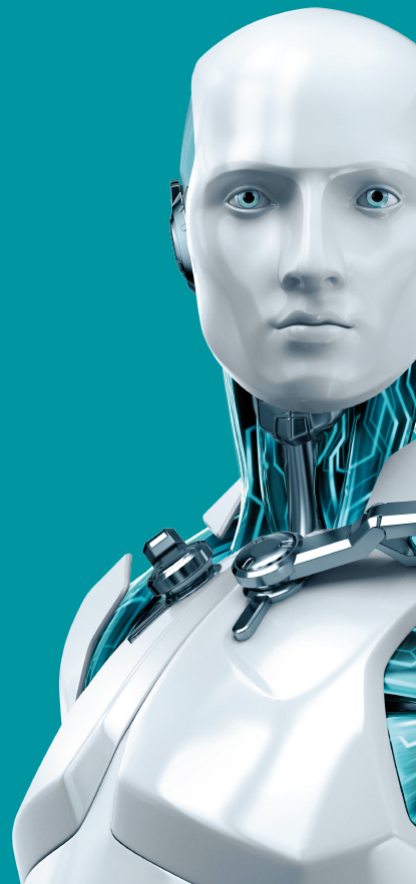
NOD32® ANTIVIRUS

QUICK START GUIDE

Microsoft® Windows® 10 / 8.1 / 8 / 7 (SP1) / Home Server 2011

[Click here to download the most recent version of this document](#)

ENJOY SAFER TECHNOLOGY™





NOD32[®] ANTIVIRUS

ESET NOD32 ANTIVIRUS PROVIDES STATE-OF-THE-ART PROTECTION FOR YOUR COMPUTER AGAINST MALICIOUS CODE. BASED ON THE ESET LIVEGRID[®] SCANNING ENGINE FIRST INTRODUCED IN THE AWARD-WINNING NOD32 ANTIVIRUS SYSTEM, ESET NOD32 ANTIVIRUS CONTINUES TO DELIVER UNPRECEDENTED PROTECTION AGAINST ZERO-DAY THREATS WITH CONSTANT DETECTION ENGINE UPDATES.

Integrated antivirus and antispware modules make ESET NOD32 Antivirus a complete security solution. This manual will guide you step-by-step through a typical installation and the basic configuration of the product.



NOD32[®] ANTIVIRUS

Antivirus	Anti-Ransomware protection	Low system footprint	JAWS	Antispyware
Proactively detects and cleans more known and unknown viruses, worms, trojans and rootkits.	Monitors the behavior of applications and processes that try to modify your personal data.	ESET engineered a smart solution with extremely low demands on system resources ensuring fast startup and smooth performance.	ESET NOD32 Antivirus supports the most popular screen reader JAWS.	Protects you from hidden backdoors, downloaders, exploits, crackers, hijackers, password stealers and keyloggers.

Installation

ESET NOD32 Antivirus contains components that may conflict with other antivirus products or security software installed on your computer. ESET strongly recommends that you remove any such programs to prevent potential problems.

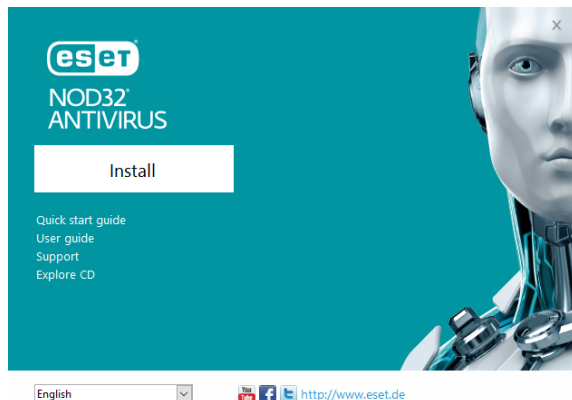
You can install ESET NOD32 Antivirus from an installation CD/DVD or by downloading the installer from www.eset.com.

Launching the installation

To launch the installer wizard, do one of the following:

1. If you are installing from a CD/DVD, insert the CD/DVD into the CD/DVD-ROM drive. If the autorun menu does not appear

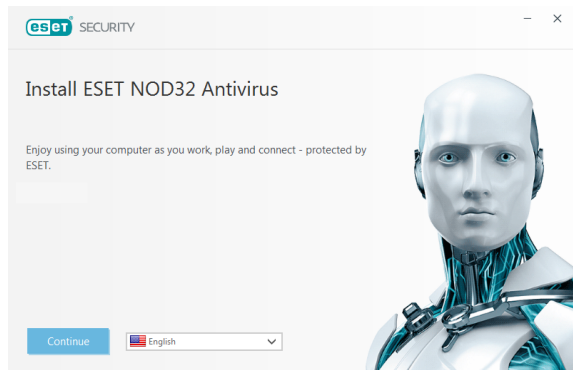
automatically, double-click your CD/DVD drive to open it manually.



The installer will automatically check online for the latest product version. If a newer version is available, you will be prompted to download it before beginning the installation process.

Next, the End-User License Agreement will be displayed. Please read the agreement and click **I Accept** to acknowledge your acceptance of the End-User License Agreement. After you accept, installation will continue.

2. If you are installing from a downloaded file, double-click the file to launch Live installer. Live installer itself is a small file; additional files required to install ESET NOD32 Antivirus will be downloaded automatically.



Product activation

The **Product Activation** window appears.

- If you purchased a retail boxed version of ESET NOD32 Antivirus, activate your product using a **License Key**. You can find the License Key on the license card or you have received it via email if you purchased your

license online. For a successful activation, the License Key must be entered as supplied. To renew your existing license, enter your renewal activation key.

- If you would like to evaluate ESET NOD32 Antivirus before activating, select **Free trial**. Specify an email address. Your test license will be sent to this address and ESET NOD32 Antivirus will be activated for a limited period of time. Alternatively, you can select **Skip** activation to continue installation without activation. You will be prompted for a License Key later.
- After selecting Use License Manager you will be asked for your my.eset.com credentials in a new window.
- If you do not have a license and would like to buy one, click **Purchase License**. This will

redirect you to the website of your local ESET distributor.

Join ESET LiveGrid®

Help us capture malware by joining our collaboration network. Your participation allows us to gather more sample threats, which helps us to offer increasingly stronger and more efficient proactive protection to all ESET users. We recommend that you enable this feature, and we thank you for your support.

Detection of potentially unwanted applications


Since some potentially unwanted applications are used legitimately and might not necessarily pose a security risk, the user's consent is required to enable detection.

Completing the installation

Start the final installation by clicking **Install**. Installation progress will be indicated by a progress bar. After installation is complete, ESET NOD32 Antivirus will start automatically. A computer restart is not normally required, ESET NOD32 Antivirus will begin protecting your computer from malware threats immediately.

Starting ESET NOD32 Antivirus

ESET NOD32 Antivirus starts protecting your computer immediately after installation. You do not have to open the program to start it. You can open ESET NOD32 Antivirus at any time to check your protection status or to perform various scanning and maintenance tasks.

To open ESET NOD32 Antivirus, double-click the ESET NOD32 Antivirus icon  located in your Windows notification area (system tray).

User interface

The **Home** section informs you about the current protection level of your computer.

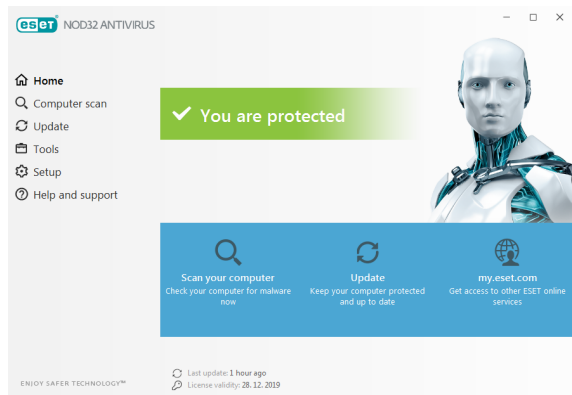
A **Computer scan** is an important part of each antivirus solution. It is used to perform a scan of the files and folders on your computer's disk(s).

The **Update** section contains important information about program updates. It is crucial that the program be updated regularly to provide the maximum level of protection against the latest threats.

The **Tools** section allows you to access advanced features such as log files, quarantine, scheduler etc.

The **Setup** options allow you to adjust the protection levels of your computer.

The **Help and support** section provides comprehensive help and support for ESET NOD32 Antivirus. You can also contact ESET technical support directly from here.

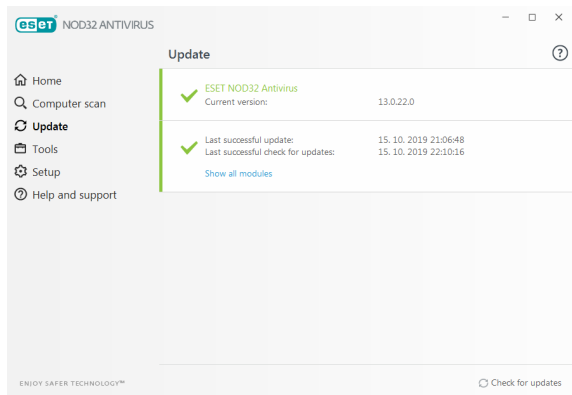


Update

ESET NOD32 Antivirus comes with a predefined task to ensure regular updates (see the **Scheduler** section in the product manual). If once installation is completed you have not yet performed an update, we

recommend starting the update manually as follows:

From the ESET NOD32 Antivirus main program window, click **Update** from the main menu on the left and then click **Update now**.



The update module will connect to the Internet, contact an available ESET update

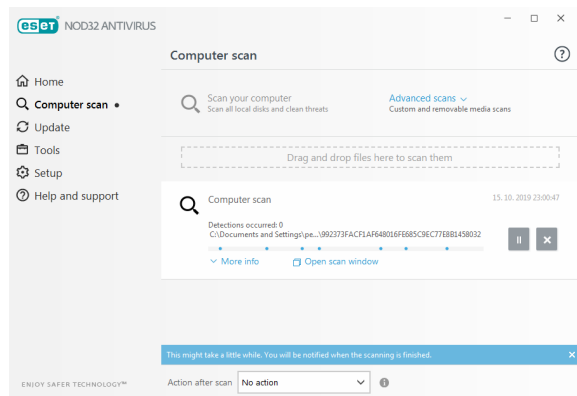
server and download digitally signed update files. These updates contain the most recent malware signatures and new definitions for advanced heuristics as well as other program modules. As soon as a newer update has been installed, ESET NOD32 Antivirus displays a notification in the system tray area and in the main program window.

Computer scan

After a successful installation and update, we recommend that you perform a complete computer scan for threats. To do this, click **Computer scan** from the main menu on the left and then select **Scan your computer** from the ESET NOD32 Antivirus primary window.

NOTE: After installing ESET NOD32 Antivirus, a computer scan will start automatically after

first successful update in order to check for malicious code.



Scanning of all local hard drives will start. The status window will display scan progress as well as the current statistics about scanned and infected files found. If a threat is detected, ESET NOD32 Antivirus quarantines the file and displays an alert in the system

tray area. You should be able to continue working as normal while the scan takes place.

Protection status

ESET NOD32 Antivirus's current protection status is indicated in the following ways:

The system tray icon

The **Home** section displays a detailed report of your protection status. In the event that any protection module is disabled, the **Home** window will show the name of the disabled module, along with a link allowing you to re-enable it.

The individual protection statuses are indicated by the following icons:



Green

Antivirus protection is working properly and your computer is protected against malicious software as well as network attacks. This status indicates that all protection modules are enabled and the detection engine is up-to-date.



Orange

This icon is displayed if your operating system does not have all necessary operating system updates installed.

The orange icon is displayed if

- Real-time file system protection is enabled, but the maximum level of protection is not ensured.

- Email client protection or Web access protection is disabled or malfunctioning.



Red

- Real-time file system protection is disabled or malfunctioning. Since the proper function of this module is vital to your system's security, we recommend re-enabling the inactive module immediately.

- The detection engine is out of date. If the detection engine is not updated automatically, try to update it manually, or check to see if the computer is connected to Internet.

Resolving issues

ESET technical support specialists are ready to assist you in resolving any issues you may have. Before contacting technical support, we strongly recommend that you read the related topic in the product documentation (<https://help.eset.com>) or search for a solution on the ESET website. For solutions to specific issues or questions about features and products, visit our Knowledgebase at: <https://support.eset.com>

To contact ESET technical support, use the web form available at:
www.eset.com/support/contact

Submitting a technical support query

In the event of a problem, contact ESET Customer Care using the query submission form integrated into ESET NOD32 Antivirus. Click **Submit support request** in the **Help and support** section.

Copyright© 2019 by ESET, spol. s r.o.

ESET NOD32 Antivirus was developed by ESET, spol. s r.o.

For more information visit www.eset.com. All rights reserved. No part of this documentation may be reproduced, stored in a retrieval system or transmitted in any form or by any means, electronic, mechanical, photocopying, recording, scanning, or otherwise without permission in writing from the author. ESET, spol. s r.o. reserves the right to change any of the described application software without prior notice. ESET, logo of ESET, NOD32, Smart Security, ThreatSense, LiveGrid® and/or other mentioned products of ESET, spol. s r. o. are registered trademarks of ESET, spol. s r. o. Other companies mentioned here or products, may be registered trademarks of its proprietors.

Produced according to quality standards of ISO 9001:2000.

REV. 10/17/2019